

Antitodum tarantulae e Tarantella del '600

$\text{♩} = 80$

arr. Marco Messina

A

16

B

pizzicato

21

27

33

C arco

38

43

48

D arco

53

58

63

$\text{♩} = 126$

E

68

2 72 **F**



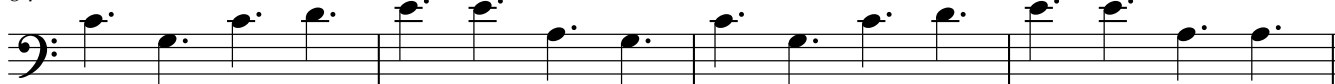
76



80



84



88 **G**



92



96



100



104 **H**



108



112



116 **I**



120 **J**

Four measures of music in bass clef, measures 120 through 123. Each measure contains four quarter notes with stems pointing up.

124

Four measures of music in bass clef, measures 124 through 127. Each measure contains four quarter notes with stems pointing up.

128

Four measures of music in bass clef, measures 128 through 131. Measures 128 and 129 each contain two eighth notes with stems pointing up, followed by two quarter notes with stems pointing up. Measures 130 and 131 each contain four quarter notes with stems pointing up.

132

Four measures of music in bass clef, measures 132 through 135. Measures 132 and 133 each contain two eighth notes with stems pointing up, followed by two quarter notes with stems pointing up. Measures 134 and 135 each contain four quarter notes with stems pointing up.

136 **K**

Four measures of music in bass clef, measures 136 through 139. Each measure contains four quarter notes with stems pointing up.

140

Four measures of music in bass clef, measures 140 through 143. Each measure contains four quarter notes with stems pointing up.

144

Four measures of music in bass clef, measures 144 through 147. Measures 144 and 145 each contain two eighth notes with stems pointing up, followed by two quarter notes with stems pointing up. Measures 146 and 147 each contain four quarter notes with stems pointing up.

148

Four measures of music in bass clef, measures 148 through 151. Measures 148 and 149 each contain two eighth notes with stems pointing up, followed by two quarter notes with stems pointing up. Measures 150 and 151 each contain four quarter notes with stems pointing up.

152 **L**

Four measures of music in bass clef, measures 152 through 155. Each measure contains four quarter notes with stems pointing up.

156

Four measures of music in bass clef, measures 156 through 159. Each measure contains four quarter notes with stems pointing up.

160

Four measures of music in bass clef, measures 160 through 163. Measures 160 and 161 each contain two eighth notes with stems pointing up, followed by two quarter notes with stems pointing up. Measures 162 and 163 each contain four quarter notes with stems pointing up.

164

Four measures of music in bass clef, measures 164 through 167. Measures 164 and 165 each contain two eighth notes with stems pointing up, followed by two quarter notes with stems pointing up. Measures 166 and 167 each contain four quarter notes with stems pointing up. The piece ends with a double bar line and repeat dots.